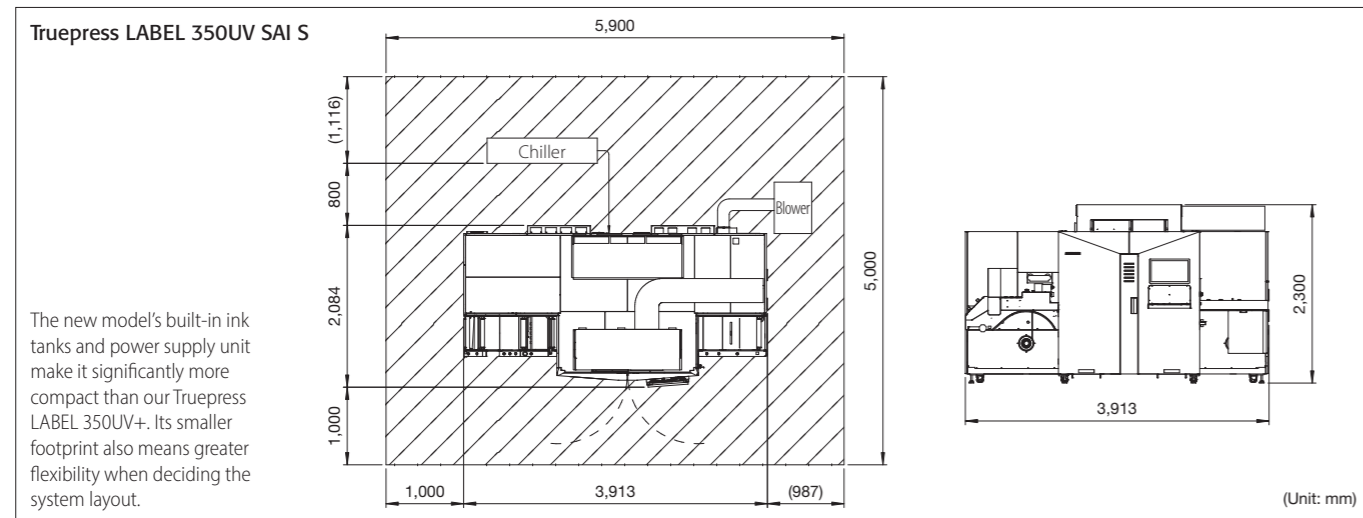


Truepress LABEL 350UV SAI Series Specification

Product name	Truepress LABEL 350UV SAI E	Truepress LABEL 350UV SAI S	Truepress LABEL 350UV SAI LM
Printing system	Piezo single-pass printing		
Resolution	600 × 600 dpi		
Printing speed	16.1 m <sup>2</sup> (173.3 ft <sup>2</sup> ) / min at 50 m (164 ft) / min 60 m (196.8 ft) / min is option.	19.3 m <sup>2</sup> (207.8 ft <sup>2</sup> ) / min at 60 m (196.8 ft) / min	
Printing size	Width: Maximum 322 mm (12.6"), Repeat length: 50.8 mm to 2,438.4 mm (2" to 96")		
Media size	Width: 100 mm to 350 mm (4" to 13.7"), Roll diameter: Maximum 750 mm (29.5"), Weight: Maximum 120 kg (264 lb)		
Media thickness	0.09 to 0.35 mm (3.5 to 13.7 mil)	0.04 to 0.35 mm (1.6 to 13.7 mil)	
Inks	Truepress inks for 350UV LS Ink tank capacity: 8 liters per color Ink bottle capacity: 4 liters per color	Truepress inks for 350UV LV Ink tank capacity: 8 liters per color Ink bottle capacity: 4 liters per color	Truepress ink for 350UV+LM Ink tank capacity: 8 liters per color Ink bottle capacity: 4 liters per color
Output configuration	CMYK (standard specification) CMYK + White, CMYK + Orange CMYK + White + Orange White and Orange inks can be added on-site.	CMYK + White (standard specification), CMYK CMYK + White + Orange, CMYK + White + Blue CMYK + White + Orange + Blue White, Orange and Blue inks can be added on-site.	CMYK + White (standard specification) CMYK + White + Orange Orange ink can be added on-site.
Printheads	4 step grayscale printheads, Droplet size: Minimum 3 picoliter		
Printer controller & RIP	EQUIOS for 350		
Main options	Web cleaner, Mark sensors, Corona unit, Splice detection sensors, Full color variable data processing, Reverse feed, Color expansion, CxF, In-line connection, MIS connection(CERM)*1		
Specialized options	Printing speed of 60 m (196.8 ft) / min	Double UV lamps, White printing at 50 m (164 ft) / min Chill roller, High Opacity White*3	Double UV lamps, Chill roller
Dimension (W × D × H) / Weight	Printer: 3,913 × 2,084 × 2,300 mm (154.1" × 82" × 90.6") / 2,860 kg (6,305 lb)		
Power requirements	Printer: Three phase, 4 W, 380 to 415 V, 50/60 Hz, 31 kW, 50 A*2 PC: Single phase, 100 to 240 V, 50/60 Hz, 600 W Earth leakage circuit breaker (200 mA sensed current) must be installed on the printer.		
Operating environment	Required temperature relative humidity: 15 to 25°C (59 to 77°F) / 40 to 70% [no condensation] Warranted temperature and relative humidity: 18 to 24°C (64.4 to 75.2°F) / 40 to 70% [no condensation] Recommended elevation: less than 1,000 meters above sea level		
Incidental utilities	Air-pressure utilities such as compressor, Connection to exhaust duct	Air-pressure utilities such as compressor, Connection to exhaust duct, Chiller	Air-pressure utilities such as compressor, Connection to exhaust duct, Chiller, Nitrogen generator

\*1. This option is not available in some region  
\*2. A boost transformer is required when installing in 200V area.  
\*3 This option must be used with Double UV lamp option.

Space requirements (mm)



Truepress LABEL 350UV SAI Series  
Access to product information



SCREEN Graphic Solutions Co., Ltd.

- HEAD OFFICE**  
• Tenjin-ku-machi 1-1, Teranouchi-agaru 4-chome, Horikawa-dori, Kamigy-ku, Kyoto 602-8585, Japan / Tel: +81-75-414-7610
- SCREEN GP Americas, LLC**  
• 150 Innovation Drive • Ste. A, Elk Grove Village, IL 60007, U.S.A. / Tel: +1-847-870-7400 / Fax: +1-847-870-0149 www.screenamericas.com
- SCREEN GP Europe B.V.**  
• Thialandlaan 9, 1432DJ Aalsmeer, The Netherlands / Tel: +31-20-456-78-00 www.screeneurope.com  
U.K. office / Tel: +44-1582-72-5400
- SCREEN GA Shanghai Co., Ltd.**  
• Room A05, 1/F, Building No.1, No.40 Wan Shui Road, Shanghai, China, 200072 / Tel: +86-21-3126-5122 www.screenchina.com  
Beijing office / Tel: +86-10-6708-9271  
Guangzhou office / Tel: +86-20-8928-9363  
Hongkong office / Tel: +852-2963-0038
- SCREEN HD Korea Co., Ltd.**  
• K-TOWER 11F, 88, Iljok-ro, Manan-gu, Anyang-si, Gyeonggi-do, 13901, Korea / Tel: +82-2-727-0800 / Fax: +82-2-727-0876 www.screen-korea.com
- SCREEN GP Australia PTY., Ltd.**  
• Suite 16A, 2 Eden Park Drive, Macquarie Park, NSW 2113, Australia / Tel: +61-2-9016-3400 / Fax: +61-2-9016-3425 www.screenaustralia.com
- SCREEN GP Taiwan Co., Ltd.**  
• 4th Floor, No. 126-1, Min-tsu West Road, Taipei, Taiwan R.O.C. / Tel: +886-2-2586-2711 / Fax: +886-2-2591-4367 www.screen-gptw.com.tw

The QR code on the right can be used to check whether this brochure is the latest version.



We reserve the right to alter product design and specifications without prior notice.

No.205-189E V7-E SCI 07-23

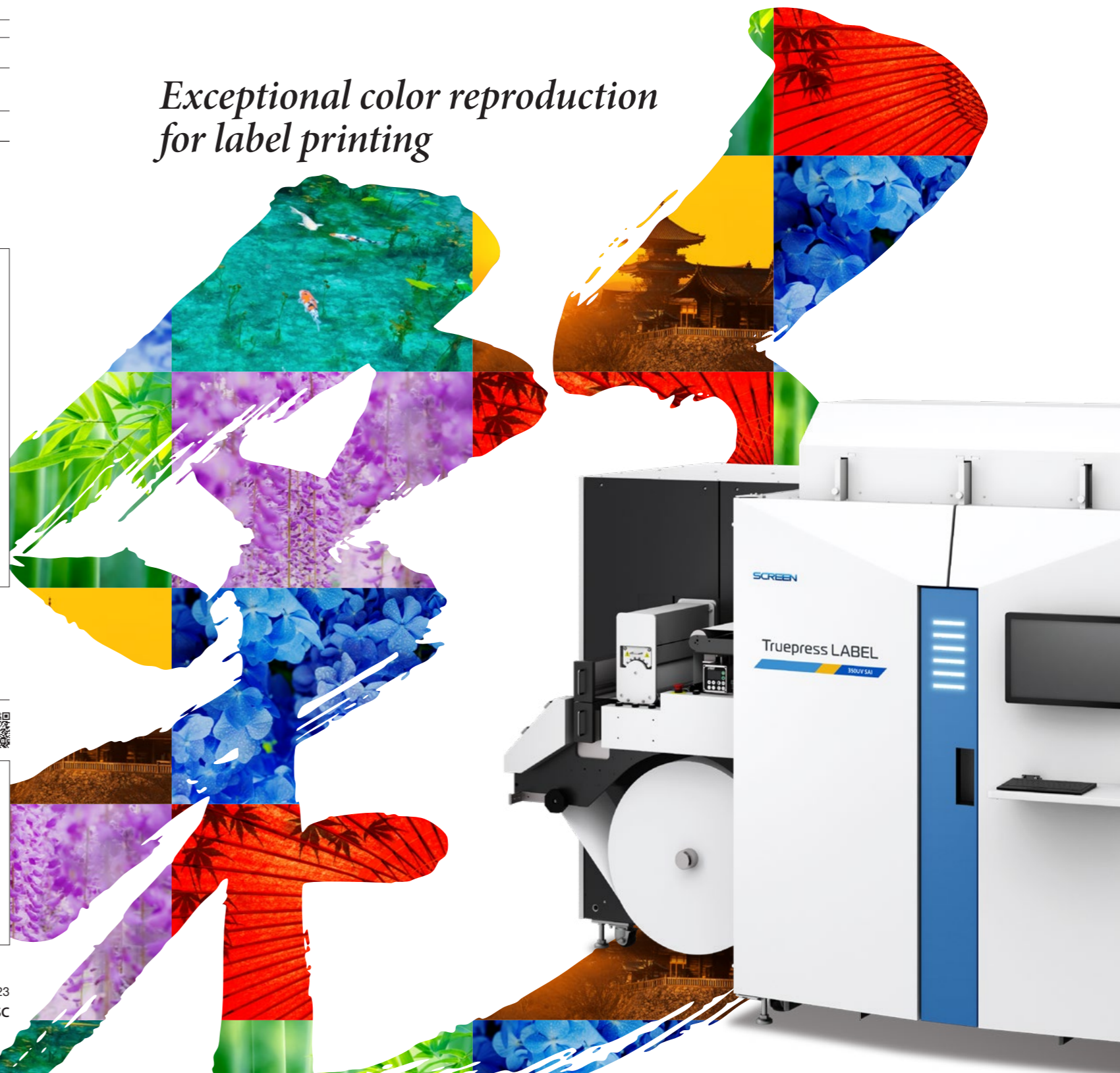
Printed by the Truepress JET 520HD+ / Truepress ink SC

Internet web site : [www.screen.co.jp/ga/en](http://www.screen.co.jp/ga/en)  
[www.screenamericas.com](http://www.screenamericas.com)  
[www.screeneurope.com](http://www.screeneurope.com)

Truepress LABEL 350UV SAI Series

UV Inkjet Label Printing System

Exceptional color reproduction  
for label printing



# Exceptional color reproduction for Label printing

## Truepress LABEL 350UV SAI

Print size: Up to 322 mm (12.6") wide  
 Media width: 100 to 350 mm (4" to 13.7")  
 Media thickness: 0.04 to 0.35 mm (1.6 to 13.7 mil)  
 Roll diameter: 750 mm (29.5")  
 Resolution: 600 x 600 dpi



### Applications



### Features

**HIGH  
PRODUCTIVITY  
AND  
QUALITY**

High productivity label printing system, including high speed 60 m/min version, supports wide range of application with high quality.

**STABILITY**

Outstanding stability enables same print quality in repeat job regardless of operator skill level.  
*Results are affected by factors such as lot and output conditions. Assessments are based on in-house tests.*

**EASY  
OPERATION**

Easy touch panel operation simplifies high quality printing and automated maintenance such as head cleaning.

**BROAD  
APPLICATION**

Truepress ink for 350UV series have been developed for a wide range of applications and compliance with many global ink regulations.

### SEGMENT BY EACH MODEL, S, E, LM

<b>S Model</b> <i>Standard model offering outstanding versatility</i>	Color configuration		 LV ink <small>(EuPIA compliant/swiss ordinance)</small>
	Productivity	 60 m/min <small>*without white</small>	 30 m/min <small>(Upgradable to 50 m/min) *with white</small>
	Specific features for more capacity	- Chill roller for thin film - High performance white: Upgradable white speed to 50 m/min and more opaque white with double UV lamp	
<b>E Model</b> <i>Entry model designed to minimize the initial investment</i>	Color configuration		 LS ink <small>(swiss ordinance)</small>
	Productivity	 50 m/min <small>(Upgradable to 60 m/min) *without white</small>	 30 m/min <small>*with white</small>
<b>LM Model</b> <i>Low migration model suitable for food and Pharmaceutical labels</i>	Color configuration		 LM ink <small>(EuPIA/Nettle guidance/swiss ordinance)</small>
	Productivity	 60 m/min <small>*without white</small>	 30 m/min <small>*with white</small>
	Specific features for more capacity	Chill roller for thin film	

### Meet Truepress LABEL 350UV Series Customers

*"The colors are very stable and scratch-resistant, which is appreciated by label buyers from all industries"*

To break into a new market, Belgian SME Elep has chosen the SCREEN Truepress LABEL 350 SAI LM – a digital-printing label press that meets the latest standards for food packaging. "The 'SAI' in the printer's name refers to the bright, high-quality colors it can print. And 'LM' stands for the 'low migration' of ink particles, and the LM ink complies with key regulations in Europe for food packaging," says Yves Peiffer, Elep's CEO.

Elep  
Lommel, Belgium



Further information  
▶▶▶



*"Responsiveness and service are very important, we needed a digital printer to serve them in a cost-effective and qualitative way."*

Bourges, France – With the installation of a Truepress LABEL 350UV SAI S, its second digital label printer, French company Étiquettes Pierre Foucher (EPF) is further expanding its offering. "The SAI S, and the investments we made in recent years, promise our company to look to the future with confidence, as the opportunity of new markets opens up to us," concludes Nicolas Lavalette.

Étiquettes Pierre Foucher  
Bourges, France

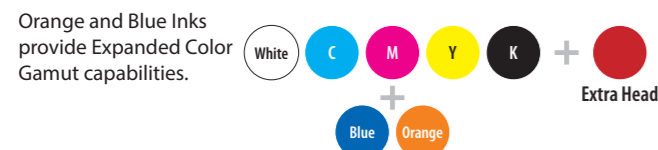


Further information  
▶▶▶

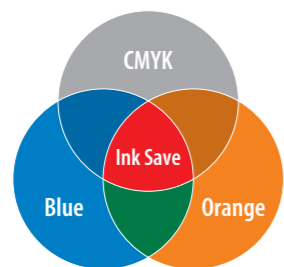


## HIGH QUALITY

Expanded Color Gamut (ECG) inks ensure superior color reproduction while an extra printhead provides optimum scalability

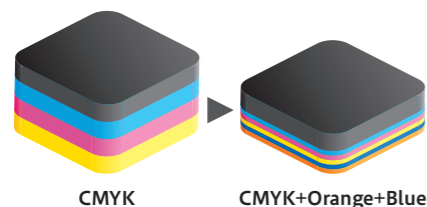


Reproduce spot colors with ECG capabilities without increased ink usage.



Comparison of film thicknesses with six inks

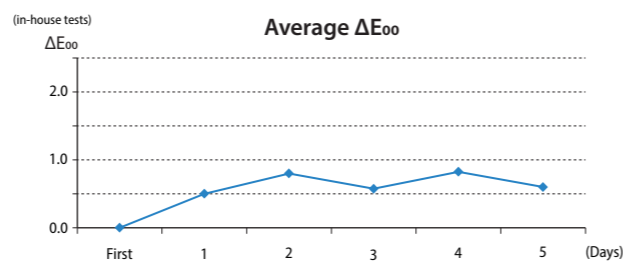
Orange and blue can now be added within the CMYK gamut. As well as reducing the overall ink volume, this creates thinner individual layers.



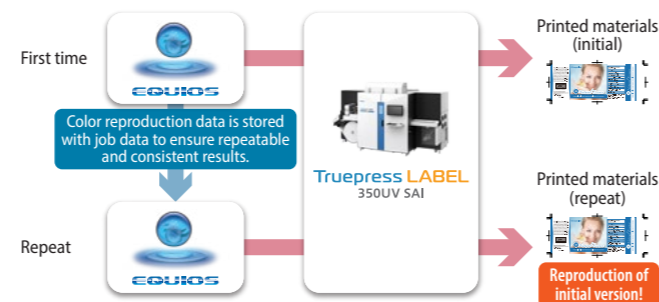
Greater output stability ensures reliable reproduction even for repeat jobs

The color variation stays within dE3 not just from the start to end of a current job but even for repeat jobs printed several days later.

Color variation from start to end of job

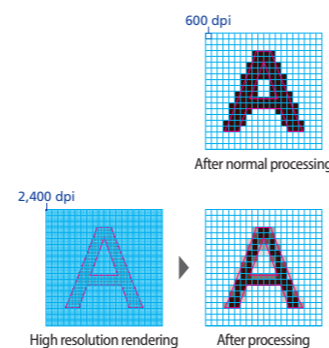


Outstanding color reproduction even for repeat jobs



Precise reproduction of fine lines and text and barcodes greatly improves the security and quality of label printing

Even fine lines and text can be printed with great precision. This provides superior legibility on medical, supplement and other labels with large amounts of information. The use of micro-droplets also supports all major types of security printing, including QR and barcodes plus dot codes and tint patterns. High resolution rendering also ensures the contours of characters and curves are always smooth while a choke function is provided to help refine outline characters.



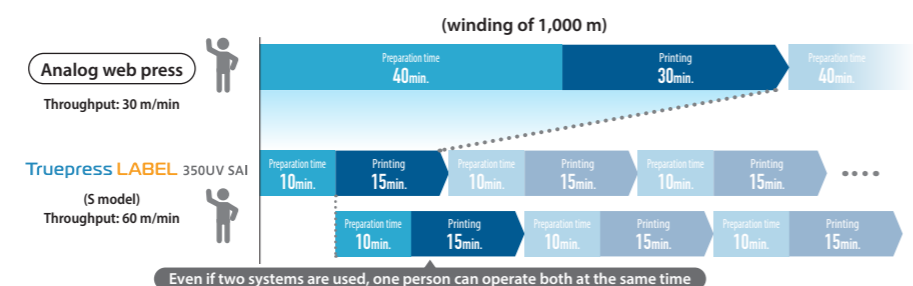
## HIGH PRODUCTIVITY

Major increases in productivity enable efficient handling of mixed, medium lot and fast turnaround work

With SAI-5 model, print speeds have been boosted to 60 meters per minute, while the time required for preparation work has been dramatically shortened compared to an analog press. A single SAI system can now deliver the same level of productivity as three analog web presses.

Results are affected by factors such as lot and output conditions. Assessments are based on in-house tests.

Throughput of Truepress LABEL 350UV SAI series vs. analog web presses (in-house tests)



## EASY OPERATION

Central touch panel operation streamlines processing and boosts efficiency

All steps required for printing can now be performed directly from a system's touch panel. Even daily head cleaning can be activated by pressing a single button. An operator can learn how to handle the press within one week thanks to the highly intuitive GUI.

This GUI also greatly simplifies processes such as color, spot color and media matching, even for inexperienced operators. A single operator can easily handle all stages from color matching after roll replacement right through to printing even when multiple systems are used together.

The user-friendliness of the GUI also eliminates the problems usually experienced when training new staff. This truly is a major step forward in ease of use for operators.

In addition, the interface with CxF ToolBox by CGS has been further enhanced, both simplifying and improving the accuracy of color matching. This includes the creation of halftones and spot color overprints which previously required a large amount of color measurement work.

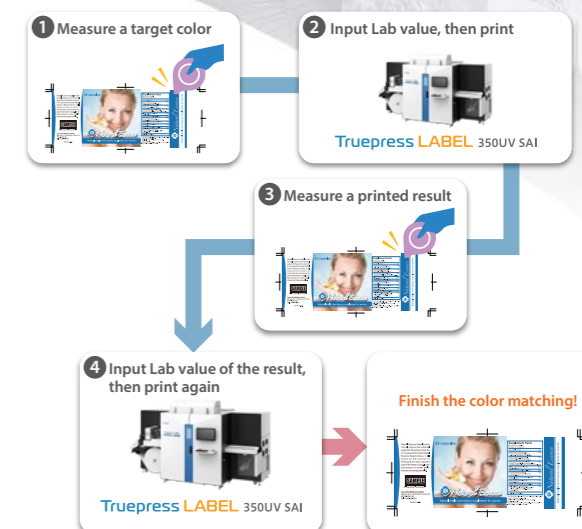
Highly intuitive GUI simplifies operation



Main operation screen

Head cleaning screen

Simplified color matching



## Options

### Corona unit

Performing corona discharge onto the media before printing improves the surface and increases ink adhesion.

### Web cleaner

With its combination of a cleaning roller and adhesion roller, the web cleaner effectively removes dust including paper particles and powder. This device ensures low maintenance and stable, uninterrupted operation.

### Mark sensors

The mark sensors read light sensitive marks that have been printed in advance, allowing them to be used as references for performing high-precision overprinting.

### Chill roller

Adoption of the refrigerated chill roller has increased stability when outputting thin film media. This improved handling of thin films opens up a range of new opportunities for package printing.

\* Not available for the E model. Installed as a standard feature in other models.

### NEW

### High Opacity White

With the option, higher opacity white can be achieved at the same speed as the normal white print. It enables to reproduce more opaque white which is usually needed for cosmetic and toiletries labels.

### Splice detection sensors

The splices in joined media (splice media) are detected with dedicated sensors. Following detection, the printheads move up and down while the processing speed is maintained. This makes it possible to continue output without stopping the equipment.

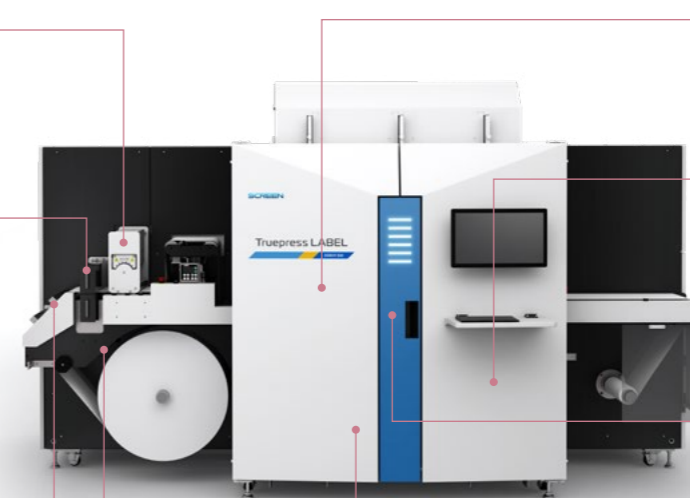
### Reverse feed

Automatic reverse feed function enables to minimize substrate wastes. Operators can reverse substrate with simple setting in advance.

### Double UV lamps

SAI systems are fitted with two newly developed high-power UV lamps,\* significantly increasing ink adhesion.

\* Not available for E model.



# BROAD APPLICATIONS

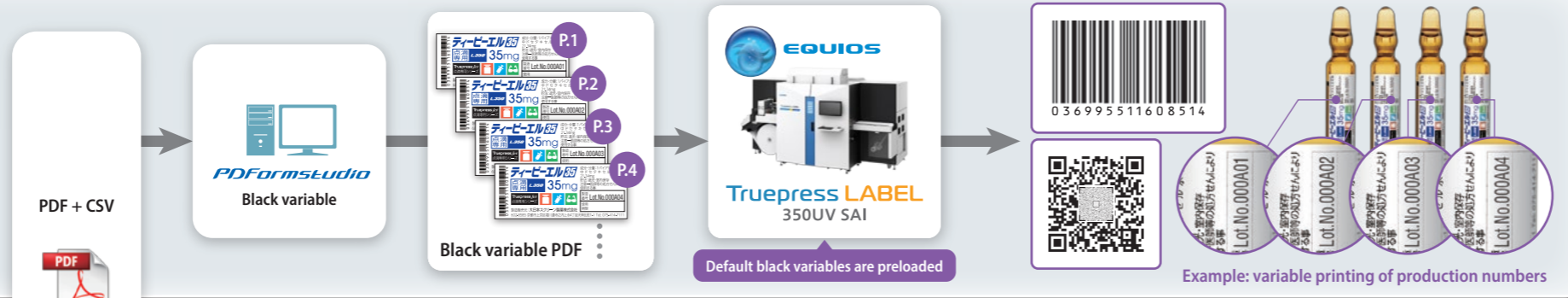
## More efficient production and management

EQUIOS is able to read print data, including die cutting specifications, from an MIS or other process management system. This helps to both streamline operations and reduce costs for printing presses.



## Black variable

Extra value can easily be added to jobs thanks to features such as serial number-based traceability or QR codes for promotional campaigns.



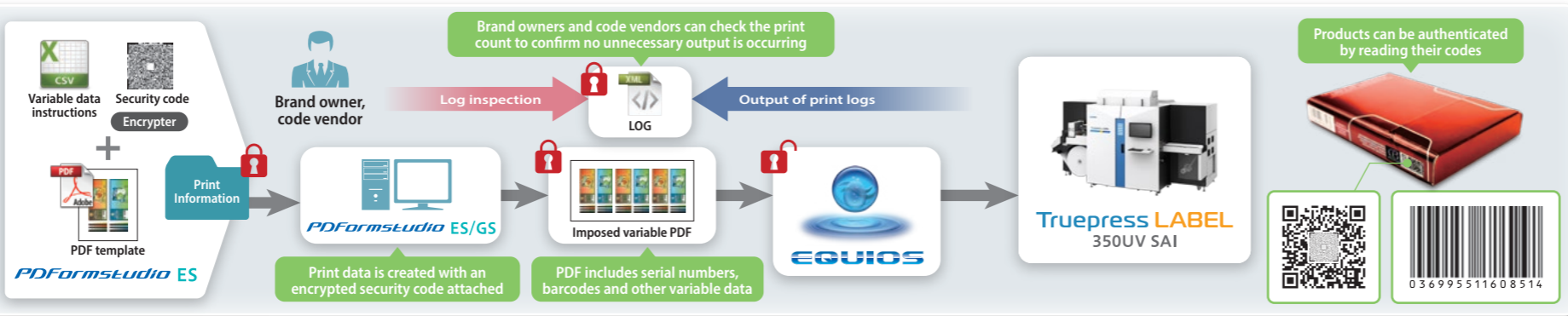
## Color variable

Color variable functions enable the production of labels with greater visual impact. The ability to output multi-page PDFs also gives greater freedom in content creation.



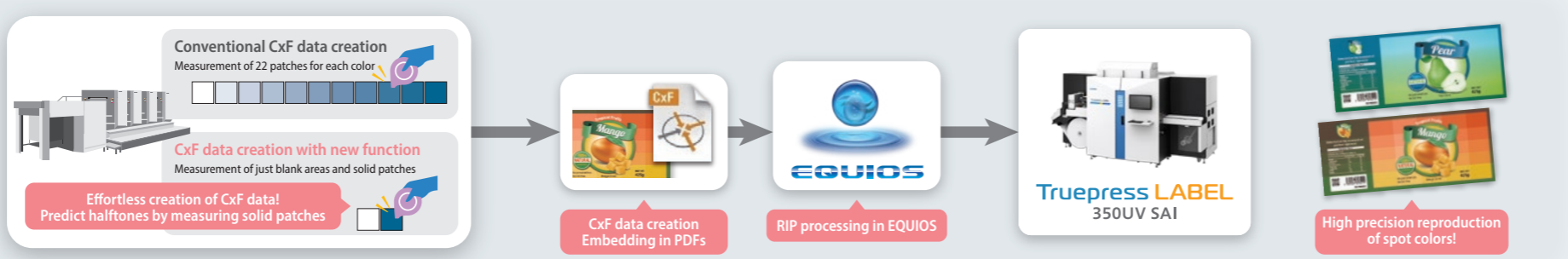
## Authentication and traceability

Valuable digital data can be reliably protected. Items such as security codes help to prevent pirating or reselling of data while clients can be notified of print counts and other details. These features effectively build trust with brand owners.



## Easier, more precise color matching

CxF ToolBox from CGS now includes our proprietary function for predicting halftones, which links seamlessly to provide simpler yet more precise matching of spot colors for analog printing. Color matching for halftones and spot color overprints usually requires major color measurement work, making it highly complicated. Our halftone prediction function dramatically reduces this time-consuming process. Color matching can now be performed simply by measuring blank areas and solid patches on the substrate.



# Network support

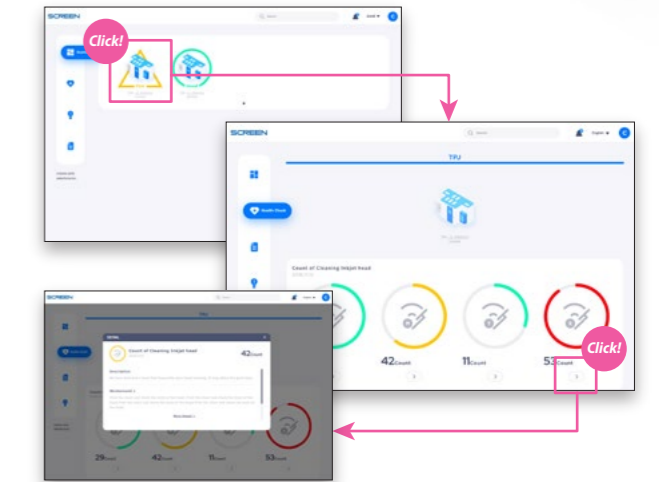
Real-time maintenance minimizes down time

## TRUST Network Service

TRUST Network Service is a proprietary support program provided by SCREEN to prevent unexpected problems. This program offers a full menu of services including predictive diagnosis based on monitoring equipment conditions, as well as regular analytical and maintenance reports. If trouble does occur, TRUST is able to identify the area of malfunction and alert the operator as well as log the instance for reporting purposes.

### Health check and advisor

In this dashboard, operator can easily check machine's status. The analysis screen tracks the usage of consumable and other items. It also issues alerts when necessary, allowing potential problems to be eliminated. This system automatically suggests precise solutions to the alerts so it is able to resolve potential problems by yourself.



### Dynamic dashboard

The dashboard allows cloud-based monitoring of the operating status of 350UV systems. Parameters such as print time, ink consumption and job progress can all be checked at a glance, helping to ensure systems are running at peak efficiency.



### Job support tools

Usage statistics for ink, paper and other items make it possible to accurately calculate the cost of individual jobs. Job logs and consumption data can all be checked locally by users as required.



Contact your local SCREEN representative for detailed information on TRUST Network Service.